

1 Overview

Thank you for purchasing a hardware license from PEmicro. There are two types of PEmicro hardware license:

1) Used With PEmicro Software

Most PEmicro software includes a hardware license. This license will be permanently activated on a PEmicro hardware interface (Multilink or Cyclone). That hardware interface will then work with this version of the licensed software on any machine where a supported version of the software is installed.

2) Used To Add Advanced Cyclone Features

Some advanced features (such as a Cyclone LC SDHC Port Activation License) can be added to a Cyclone LC programmer by installing the appropriate hardware license on the Cyclone.

2 Supported Hardware

The following PEmicro interfaces support hardware licenses:

Multilink Debug Probes

- Multilink ACP (part#: USB-ML-ACP) - Rev. A or newer
- Multilink Universal (part#: USB-ML-UNIVERSAL) - Rev. C or newer
- Multilink Universal FX (part#: USB-ML-UNIVERSAL-FX) - Rev. B or newer

Cyclone Programmers

- Cyclone LC (part#: CYCLONE-LC-ARM, part#: CYCLONE-LC-UNIV) - all Revs.
- Cyclone FX (part#: CYCLONE-FX-ARM, part#: CYCLONE-FX-UNIV) - all Revs.

The Revision of PEmicro hardware interfaces is located on the rear label. If your hardware is an older Rev., please contact us at pemicro.com. A trade-in program is also available for Multilink and Cyclone interfaces which provides a discount on purchases of new hardware.

3 Downloading A Software Purchase

If you wish to download purchased software, go to the pemicro.com website and click on My Account (login required). Then select My Downloads from the options provided.

Even if the license has not been transferred to you, as long as you have the installation code you can use the Search by Installation code box to find the appropriate software:

Download does not show? Search by installation code:

Product	Order #	Invoice #	Invoice Date	Downloads
PROG-HL-ARM	*****	*****	Mar 30, 2021	 Download Software  Activation Guide

Find the appropriate software and click on Download Software to download.

Note: Before installing software, if an older version of the software already resides on your system, please uninstall the existing software using "Add/Remove Programs" on your PC.

Once the software has been downloaded, run it to install, following the installation instructions.

4 Transferring A License

If you wish to transfer a license to someone else, go to the pemicro.com website and click on My Account (login required). Then select My Product Licenses from the options provided.



Search by installation code:

License ID	Order # Invoice #	Date Bought	Product	Action
65696 Active License	95154 97805	2020-Mar-02	PROG-HL-12Z	View License Transfer license to someone else Download my software

Find your software among those listed and click on Transfer License To Someone Else. This page also allows you to view the license, or download the software.

5 Locating the Installation Code

You will require an Installation Code to install the hardware license on your Multilink debug probe or Cyclone programmer. The Installation Code can be found in the following locations:

1. The shipping confirmation email that was sent to you by PEmicro
2. The packing slip that was included in your shipment
3. Online. Log into our website at <http://www.pemicro.com>, and then:
 - a) Click "My Account"
 - b) Click "My Product Licenses" to view your purchased and registered licenses

6 Entering the Installation Code

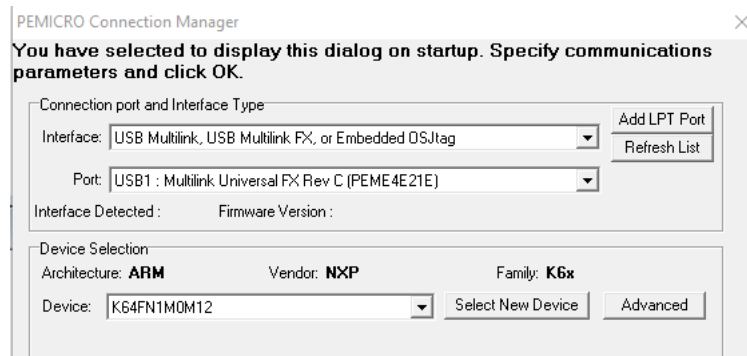
Before beginning, connect your Multilink or powered Cyclone to the PC.

You will be entering the installation code into the License Activation Form. There are two ways that you can access this form: via the Connection Manager, or via the Hardware License Manager.

1. Via the Connection Manager

Please follow these steps:

- Step 1. Launch the PEmicro software.
- Step 2. The Connection Manager will open.



PEMICRO Connection Manager

You have selected to display this dialog on startup. Specify communications parameters and click OK.

Connection port and Interface Type

Interface:

Port:

Interface Detected : Firmware Version :

Device Selection

Architecture: **ARM** Vendor: **NXP** Family: **K6x**

Device:

- Step 3. Choose your interface type from the Interface drop-down menu.
- Step 4. Your Multilink or Cyclone should appear in the Port window. If multiple interfaces are connected, choose the appropriate one from the drop down list.

Note: If you wish to work with your target device once the license is installed, you may wish

at this point to make other selections in the Connection Manager, but this is not required to simply activate the hardware license.

- Step 5. Click the Connect (Reset) button at the bottom of the Connection Manager to connect to the Multilink/Cyclone.

Note: If your interface has older firmware you may be prompted to update its firmware. Accept and update (this may take a few moments).



Note: When trying to access the License Activation Form via the Connection Manager, it is possible that the License Activation Form will not be presented if the software itself has been activated via a legacy license. In this case it is recommended to simply use the Hardware License Manager to install the hardware license (see below).

2. Via the PEmicro Hardware License Manager

If the user has installed recent software, the hardware license manager may be found within the software install directory. For example:

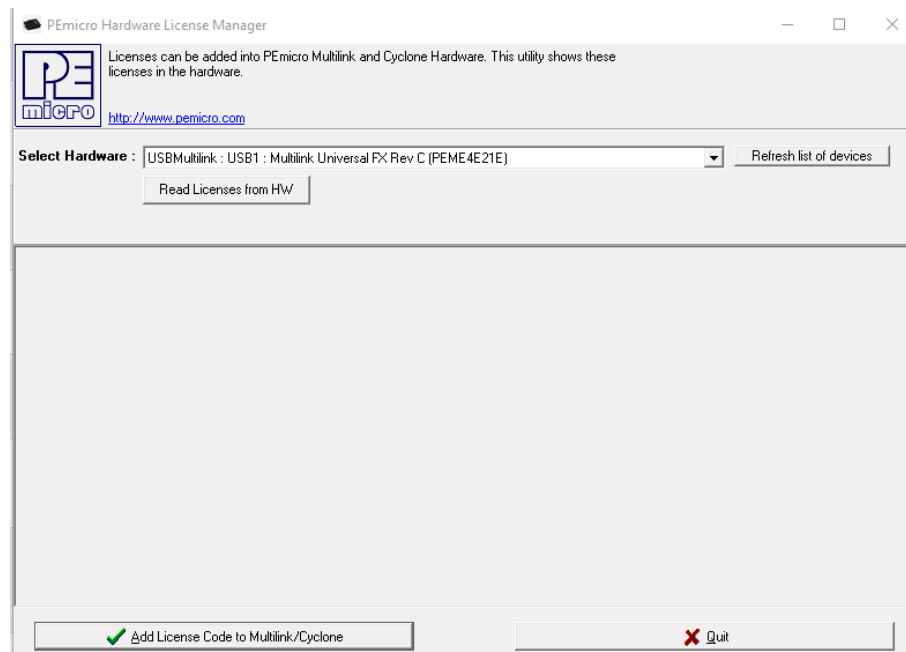
C:\pemicro\progacmp\pehardwarelicensemanager\

Multilink users who have instead downloaded and installed the USB Multilink Resources package may find it at:

C:\pemicro\multilink_resources\pehardwarelicensemanager\

To activate any hardware license (or view license information for a specific connected hardware interface).

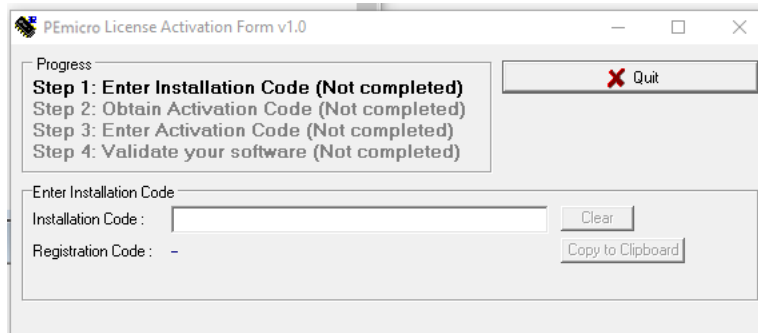
- Step 1. Run the PEmicro License Manager.
Step 2. Choose your interface from the Select Hardware drop-down list:



- Step 3. Click the “Read Licenses from HW” button. This will display any licenses that reside on the hardware interface and enable two new buttons at the bottom of the window.
- Step 4. Click the “Add Hardware-Based License for Multilink/Cyclone” button at the bottom of the window to open the License Activation Form.

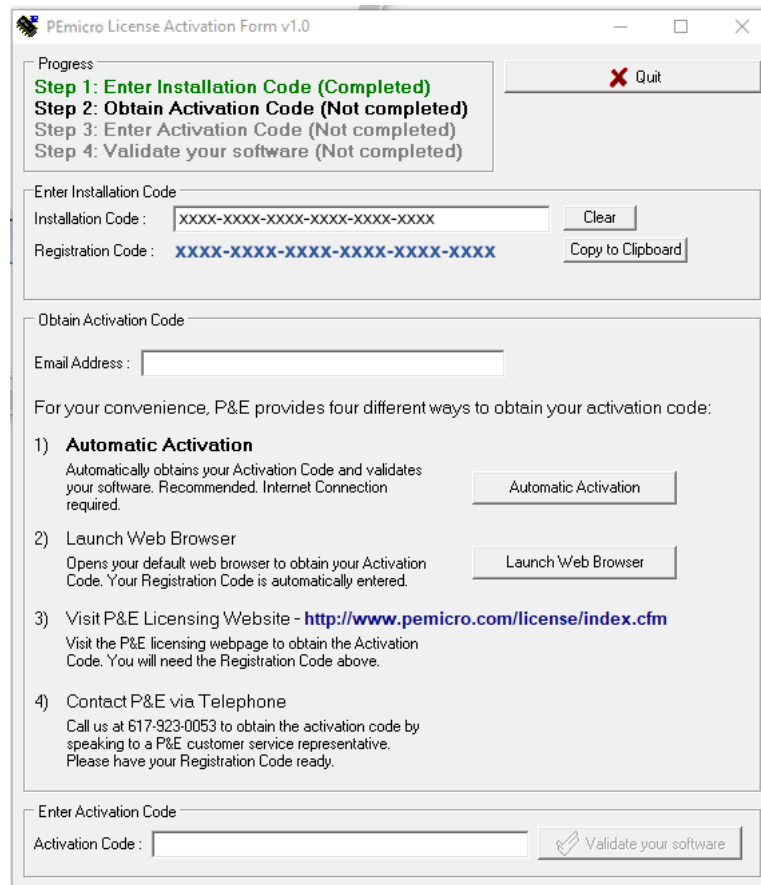
7 PEmicro License Activation Form

The hardware license cannot be transferred once it's activated, so before activation please make sure that you are installing the license on the interface that you wish to use.



The screenshot shows the initial state of the PEmicro License Activation Form v1.0. The 'Progress' section lists four steps, all marked as 'Not completed': Step 1: Enter Installation Code, Step 2: Obtain Activation Code, Step 3: Enter Activation Code, and Step 4: Validate your software. Below this, the 'Enter Installation Code' section has an 'Installation Code' field and a 'Registration Code' field (currently empty). There are 'Clear' and 'Copy to Clipboard' buttons next to the fields. A 'Quit' button is in the top right corner.

- Step 1. Enter your Installation Code in the field provided and submit. When your Installation Code is accepted your Registration Code will appear on the following screen:



The screenshot shows the PEmicro License Activation Form v1.0 after the Installation Code has been entered. The 'Progress' section now shows 'Step 1: Enter Installation Code (Completed)' in green, while the other steps remain 'Not completed'. The 'Installation Code' field now contains 'xxxx-xxxx-xxxx-xxxx-xxxx' and the 'Registration Code' field contains 'xxxx-xxxx-xxxx-xxxx-xxxx'. Below this, the 'Obtain Activation Code' section provides four methods: 1) Automatic Activation (with an 'Automatic Activation' button), 2) Launch Web Browser (with a 'Launch Web Browser' button), 3) Visit P&E Licensing Website - <http://www.pemicro.com/license/index.cfm>, and 4) Contact P&E via Telephone. At the bottom, the 'Enter Activation Code' section has an 'Activation Code' field and a 'Validate your software' button.

8 Completing Activation

First, enter your email address into the Email Address field. The License Activation Form then provides you with several ways to complete your PEmicro software activation.

1. Automatic Activation - Click the button to instantly complete activation. Requires an internet connection on the PC that you are operating.
2. Launch Web Browser - Opens the web page below and automatically enters your Registration Code. Requires an internet connection on the PC that you are operating.

P&E Product Registration & Activation Page

The first step for your P&E Product Activation has been completed.

Here is your activation code:

XXXX-XXXX-XXXX-XXXX-XXXX-XXXX-XXXX-XXXX

Please copy-paste this Activation Code into the Activation Box of your P&E Software to finish the Product Activation process. You will also get an email with the Activation Code to keep for your records.

We thank you for your business!

3. Visit PEmicro Licensing Website - This address can be used to open the same web page as option #2. You will need to copy your registration code on your own. Requires an internet connection.
4. Contact PEmicro - Email PEmicro at licensing@pemicro.com should you wish us to help activate your software.

If you have chosen an option that manually provides you with an Activation Code, once you receive it please enter it into the Activation Code field at the bottom of the form and submit.

Your Multilink or Cyclone is now activated and ready to use! If you should experience any difficulty with your activation, please feel free to contact us for assistance at www.pemicro.com.

9 Viewing Hardware Licenses

The Hardware License Manger also allows you to view the hardware licenses that are installed on a specific, connected hardware interface. To accomplish this, choose your hardware interface from the Select Hardware drop-down and then click the "Read Licenses From HW" button. The licenses will then be displayed in the window below:

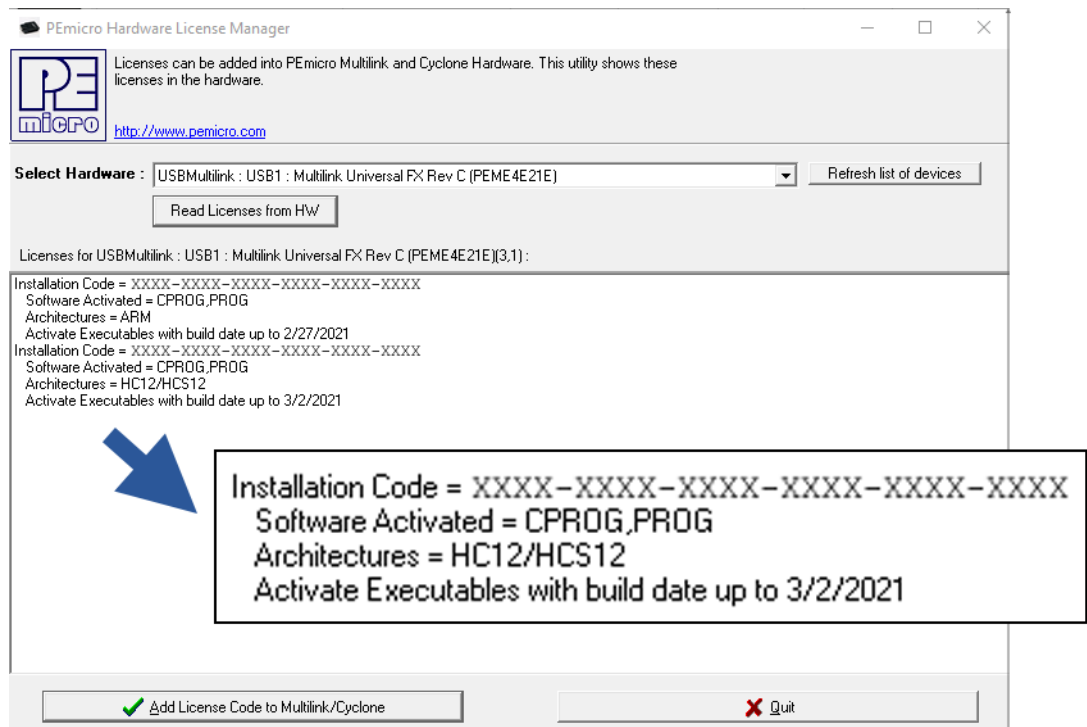


Figure 9-1: Hardware License Details

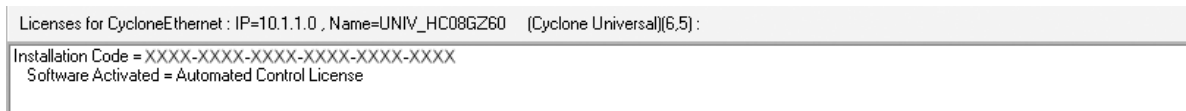


Figure 9-2: Cyclone LC Feature License

The information displayed includes your installation code, the software type, compatible architectures (if applicable), and the latest build date of software that will work with the license (if applicable).

The hardware license will work with versions of the software built up to one year after your license was purchased. During this period, the software can be updated free of charge. After one year, a discount is available when updating to the latest version of the software. After two years this discount is no longer available.

Feel free to contact PEmicro with any hardware license questions at licensing@pemicro.com.